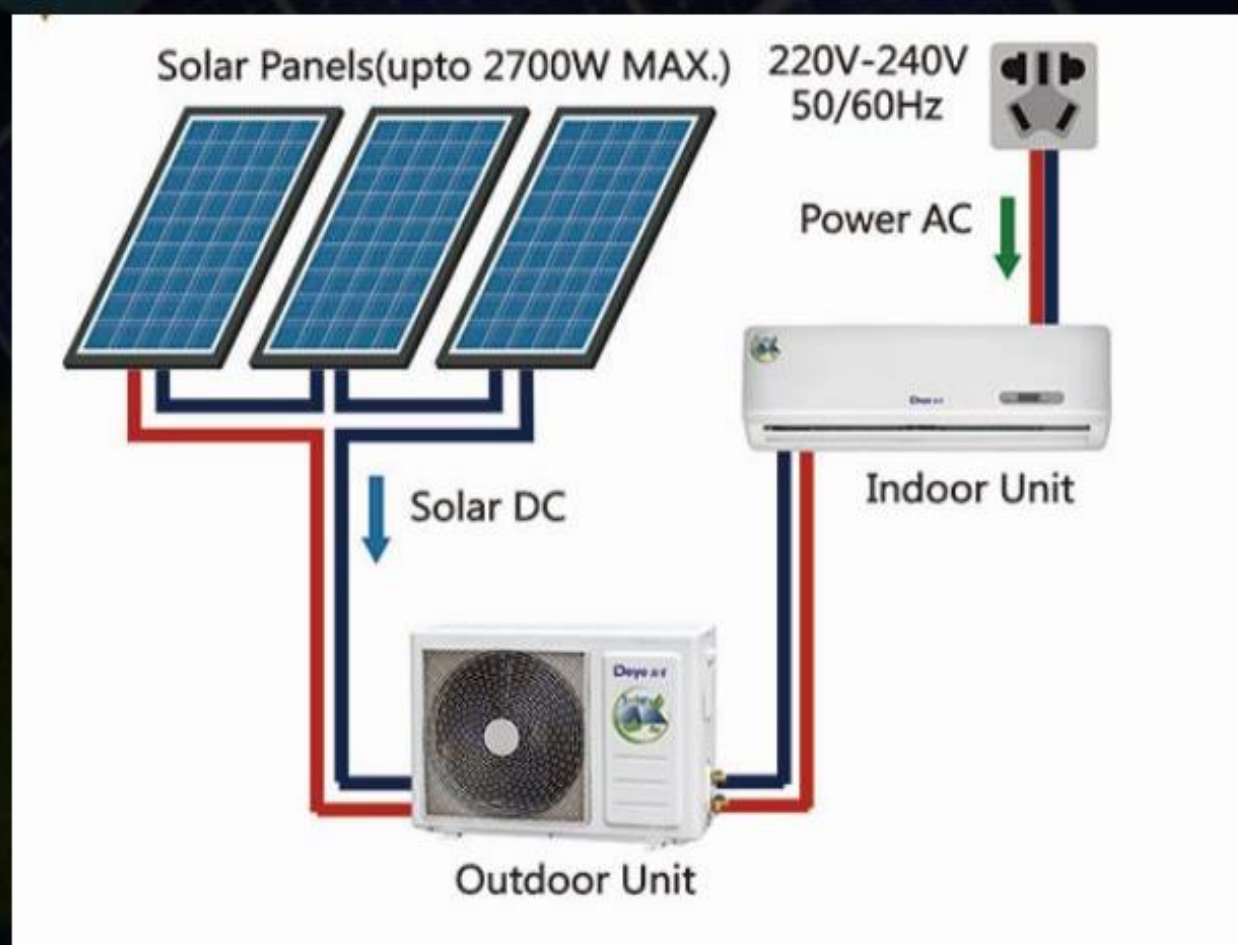


**Deye** 德業

# Solar Air Conditioner



## On Grid Model : Solar DC + Grid AC 并离网 ACDC



Time 时间	Mode 供电模式	Remarks 备注
Daytime 白天	Solar DC only 太阳能	Energy saving 100% 100%省电
	Solar DC + Grid AC 太阳能+市电	Solar DC priority 太阳能供电优先
Night 晚上	Grid AC only 市电	/

DEYE ACDC AIR CONDITIONER (R410A)				
ITEMS	UNIT	12000BTU (1.5HP)	18000BTU (2HP)	24000BTU (3HP)
Mode	/	DGWA2-ACDC-12K	DGWA1-ACDC-18K	DGWA1-ACDC-24K
Power Supply				
DC power (PV in series)	V	80~380	80~380	80~380
AC power	V/Hz	208V~240V/50~60Hz	208V~240V/50~60Hz	208V~240V/50~60Hz
Rated Cooling				
Capacity	W	3510(900~3810)	5010(1300~5700)	7000(1800~7400)
Power Input	W	920(200~1200)	1360(250~1660)	2100(410~2500)
EER	W/W	3.82	3.68	3.34
Rated Heating				
Capacity	W	3600(900~3960)	5150(1500~5250)	7000(1800~7200)
Power Input	W	940(180~1250)	1260(250~1410)	2030(340~2150)
COP	W/W	3.83	4.08	3.45
Physical Specifications(Indoor)				
Net/Gross weight	kg	9.5/11.8	15.0/17.5	15.0/17.5
Unit Dimension(WxHxD)	mm	840x205x295	1080x330x237	1080x330x237
Packing Dimension(WxHxD)	mm	920x290x360	1140x300x382	1140x362x300
Physical Specifications(Outdoor)				
Net/Gross weight	kg	33.5/37.5	35.5/40.0	46.0/51.0
Unit Dimension(WxHxD)	mm	802x564x323	802x564x323	900x700x337
Packing Dimension(WxHxD)	mm	910x622x405	910x622x405	1006x755x418



DEYE ACDC AIR CONDITIONER (R32)				
ITEMS	UNIT	12000BTU (1.5HP)	18000BTU (2HP)	24000BTU (3HP)
Mode	/	DGWA2-ACDC-12KR2	DGWA1-ACDC-18KR2	DGWA1-ACDC-24KR2
Power Supply				
DC power (PV in series)	V	80~380	80~380	80~380
AC power	V/Hz	208V~240V/50~60Hz	208V~240V/50~60Hz	208V~240V/50~60Hz
Rated Cooling				
Capacity	W	3500(800~3900)	5010(1300~5850)	6400(1800~7800)
Power Input	W	860(150~1100)	1250(220~1670)	1690(340~2550)
EER	W/W	4.07	4.01	3.79
Rated Heating				
Capacity	W	3500(900~4200)	5010(1300~5200)	7030(1800~7800)
Power Input	W	870(150~1200)	1200(220~1420)	1780(320~2190)
COP	W/W	4.02	4.18	3.95
Physical Specifications(Indoor)				
Net/Gross weight	kg	9.5/11.8	15.0/17.5	15.0/17.5
Unit Dimension(WxHxD)	mm	840x205x295	1080x330x237	1080x330x237
Packing Dimension(WxHxD)	mm	920x290x360	1140x300x382	1140x362x300
Physical Specifications(Outdoor)				
Net/Gross weight	kg	33.5/37.5	35.5/40.0	46.0/51.0
Unit Dimension(WxHxD)	mm	802x564x323	802x564x323	900x700x337
Packing Dimension(WxHxD)	mm	910x622x405	910x622x405	1006x755x418

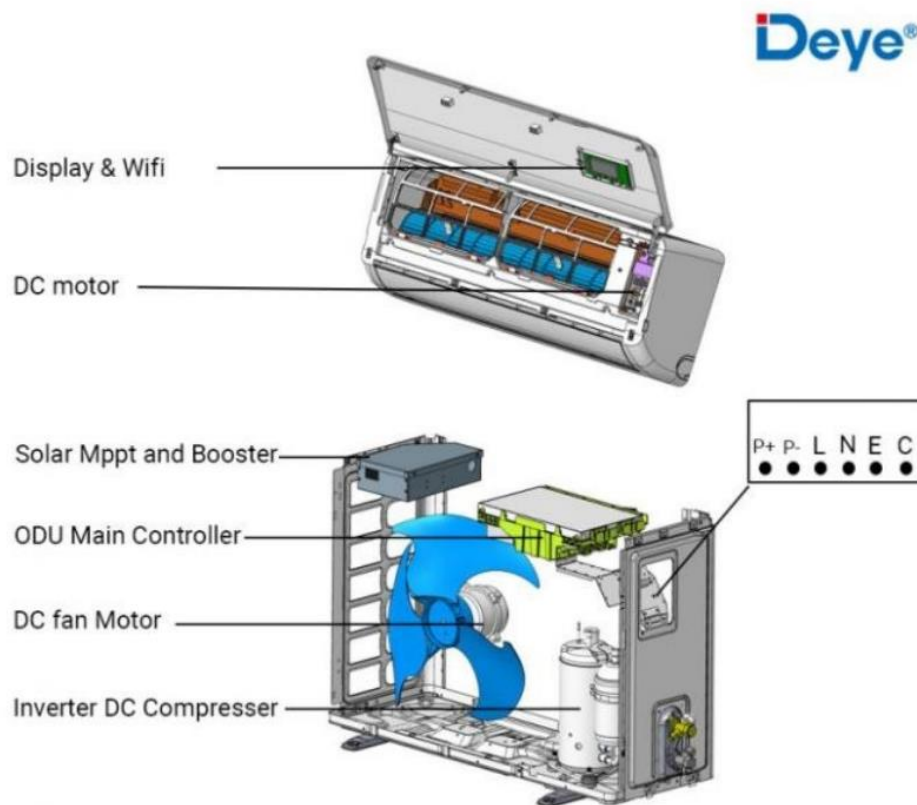




## I. Technology and Structure

Hybrid ACDC inverter solar air conditioner based on full DC inverter air conditioner and DC solar panel technology. Compared with fix speed on/off compressor or AC motor, DC inverter compressor or DC motor can adjust speed from 0.1HZ to 85HZ based on different DC power input. It is because all DC compressor and DC motor have it's own designed driver controller.

Deye have accurate inverter air conditioner controller technology and solar inverter technology for more than 12 years. Deye hybrid ACDC controller system use unstable solar panel power directly drive different type of DC compressor or DC motor. So we developed 1<sup>st</sup> DC solar water pump controller.



Deye Hybrid ACDC inverter solar air conditioner structure

## I. Installation

For Deye Hybrid ACDC inverter solar air conditioner installation mainly have two parts.

1<sup>st</sup> part is air conditioner installation, this is same as normal market R410A inverter air conditioner installation, we suggest complete by professional air conditioner installation service company with license.

2<sup>nd</sup> part is solar panel installation and connect to our outdoor unit.

Please check below and follow to finish

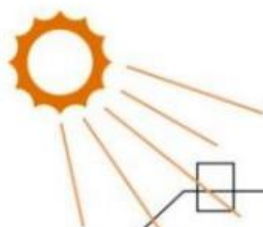
### 1. Package list



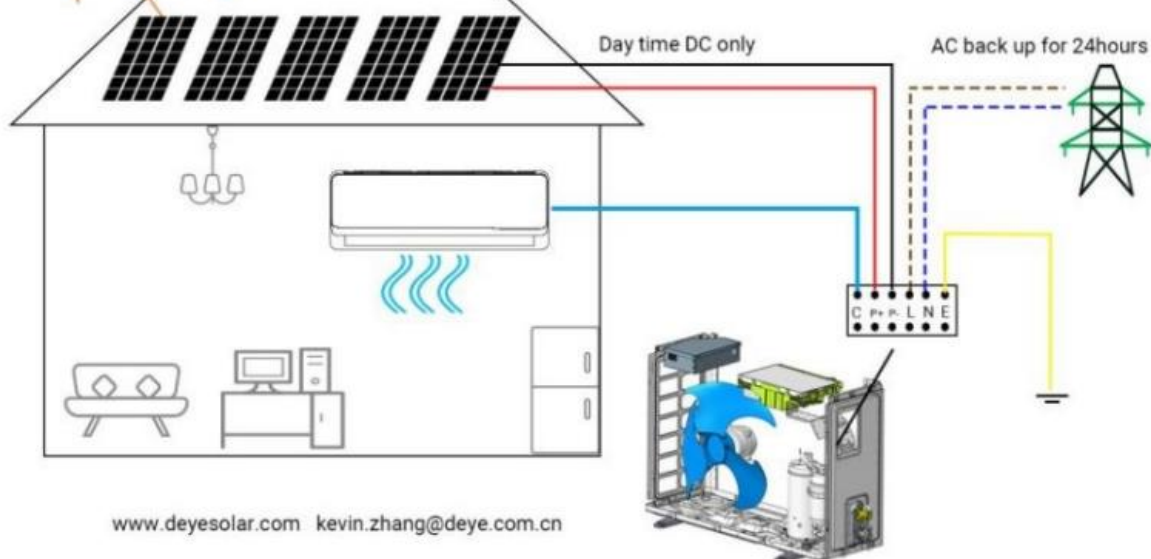
Name	QTY
Indoor unit	1
Remote controller	1
Drain Pipe	1
Installation manual user manual	1
Hanger plate	1
Indoor & Outdoor Cable	1
Accessory Bag	1
Outdoor unit	1
Copper connection Pipe	2
Scotch tape	1

### ◦ Solar panel and system installation

Below is the design how our system should be installed. If you want to use air conditioner only in day time (approximate from 7:00am to 17:00pm), then no need to install grid power to our system. If you want to ran at night with electricity or generator or you want to work mix power to get best cooling in heavy cloudy days you can install grid power part for 24 hours working.



## Deye Hybrid AC/DC Inverter solar air conditioner



### ◦ Solar panel choosing

Deye hybrid ACDC unit suit for both Poly and mono solar panel on the market from 250w to 450w. But all the solar panel should be in series connection, parallel is not allowed.

Solar air conditioner DC specification:

Solar panel advice:

Model	Solar panel In Series connection	QTY
DGWA1-ACDCBLW-12K WiFi 12000btu 1.5HP/ 1Ton		(280-400W) 4pcs (400-500W) 3pcs
DGWA1-ACDCBLW-18K WiFi 18000btu 2HP/ 1.5Ton		(280-400W) 6pcs (400-500W) 5pcs
DGWA1-ACDCBLW-24K WiFi 24000btu 3HP/2 Ton		(280-400W) 8pcs (400-500W) 7pcs

## I. WiFi control and APP power meter

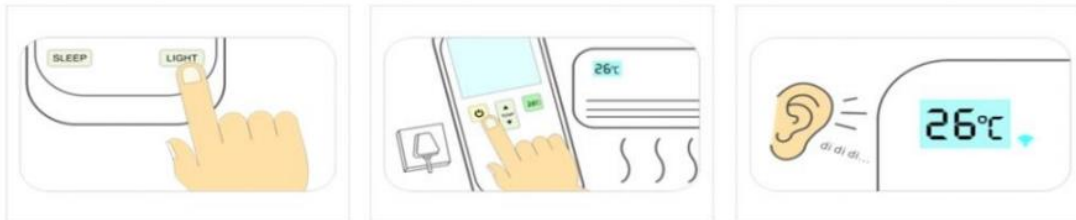
1<sup>st</sup>: Download "Solar Aircon" App(IOS and Android) from Google Play or Apple store by scan below barcode. Register with your phone number.

### Solar Aircon

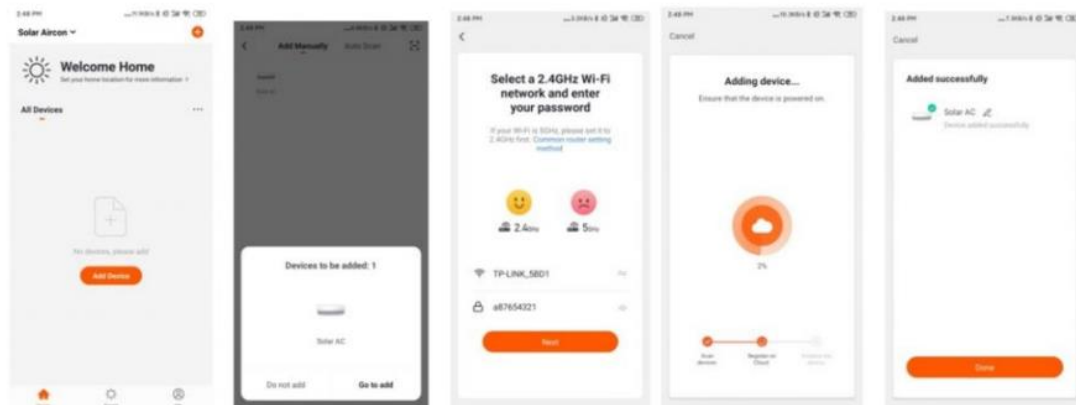


Scan QRCode for App smart control

2<sup>nd</sup>: Power on the solar air conditioner device, using remote control, press "LIGHT" button 8 or more times within 10 seconds. Check when hearing "Di Di Di Di" and the Wi-Fi indicator light is flashing.



3<sup>rd</sup>: Turn on cell phone Bluetooth and connecting family Wi-Fi. Open App, click add device, app will get our solar AC device automatically. Confirm the device, enter home or office WiFi password, then start connection. Refer to below picture.



4<sup>th</sup>: Using App control air conditioner anywhere you are through WIFI. Checking power saving data and power using by Hour/Day/Month/Year.

